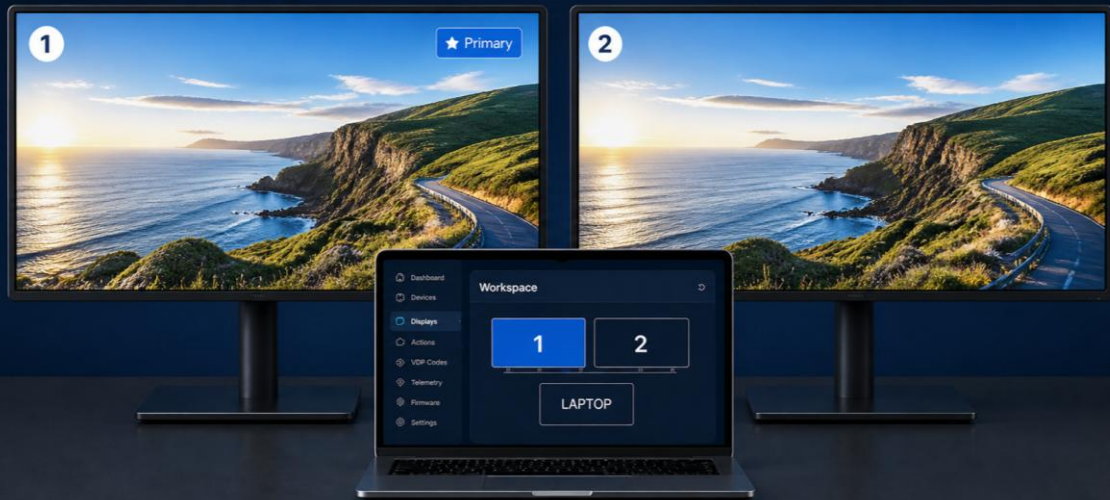


Automate. Measure. Improve.

Smart Display Automation & Telemetry



ScreenGenie™

The challenge in modern workplaces

In many organizations, employees experience daily discomfort due to poorly configured or misaligned monitors. Because of hybrid working, flexible workspaces, and changing connections, monitor settings are constantly being disrupted.

In addition, there is a frequently underestimated fact: monitors are typically factory-set to high brightness and contrast levels, which in many office environments are significantly too high. This results in unnecessary eye strain as well as unnecessary energy consumption.

Common issues:

- Excessive or inconsistent brightness and contrast
- Incorrectly positioned or rotated external monitors
- Unintentionally duplicated displays
- Poor vertical alignment between screens
- No simple presets for different workspace scenarios

Even when these settings are manually corrected, they are often lost again at the next session or when moving to another workspace.

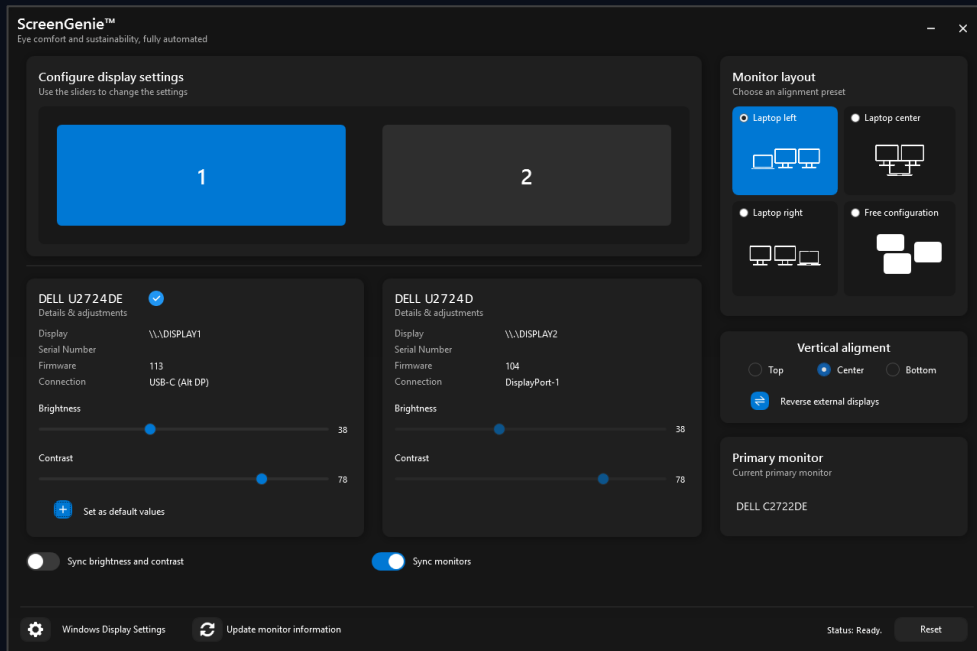
Automation

Set once. Perfect forever.

The solution: ScreenGenie™

ScreenGenie fully and consistently automates monitor settings within Microsoft® Windows 11. Without any user interaction, displays are correctly configured every time at sign-in or automatically via the ScreenGenie Agent.

The result: always a correct, ergonomic, and comfortable workspace.



Deduplication of screens

Automatically detect and extend duplicated screens



Set laptop position vs external screens

Define and enforce the laptop position for a consistent workspace



Set primary display

Set and enforce the primary display across multiple setups



Vertical alignment

Ensure perfect vertical alignment between screens



Resolution & Refresh Rate

Manage resolution and refresh rate for optimal performance



Brightness & Contrast

Adjust brightness and contrast to ergonomic levels



Force Left/Right by monitor ID

Control screen order by connection type, name or serial number



VCP-codes management

Send and manage VCP codes centrally across monitors

Telemetry

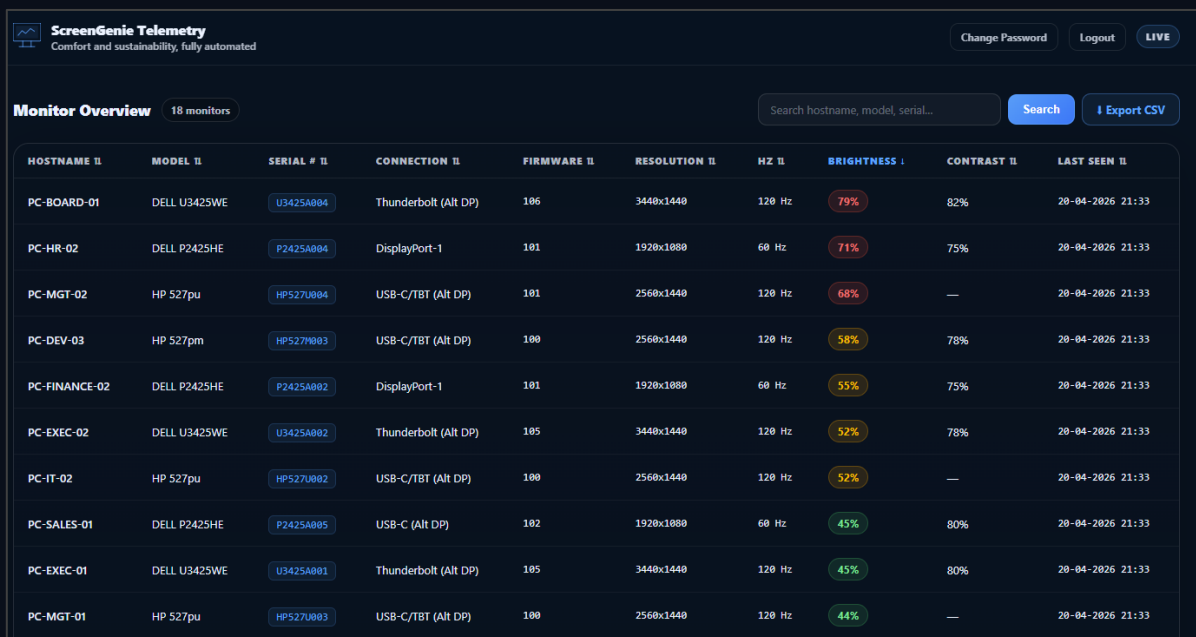
A measurable and optimized experience

The missing layer: visibility and control

In most environments, monitor settings are not only inconsistent, they are also invisible to IT. There is no structured insight into how displays are configured, whether ergonomic standards are met, or how often users experience incorrect setups.

Without telemetry, organizations have no insight into:

- Real-world brightness and contrast usage
- Monitor configuration per device and workspace
- Resolution and refresh rate consistency
- Firmware status of supported monitors
- Connection types and setup variations
- Actual monitor usage over time



The screenshot shows the ScreenGenie Telemetry dashboard. At the top left is the logo and tagline "ScreenGenie Telemetry: Comfort and sustainability, fully automated". On the top right are buttons for "Change Password", "Logout", and "LIVE". Below the header is a "Monitor Overview" section with a sub-header "18 monitors". A search bar contains the text "Search hostname, model, serial...". To the right of the search bar are "Search" and "Export CSV" buttons. The main content is a table with 10 columns: HOSTNAME, MODEL, SERIAL #, CONNECTION, FIRMWARE, RESOLUTION, HZ, BRIGHTNESS, CONTRAST, and LAST SEEN. Each row represents a monitor configuration with various details and a color-coded brightness indicator.

HOSTNAME	MODEL	SERIAL #	CONNECTION	FIRMWARE	RESOLUTION	HZ	BRIGHTNESS	CONTRAST	LAST SEEN
PC-BOARD-01	DELL U3425WE	U3425A884	Thunderbolt (Alt DP)	106	3440x1440	120 Hz	79%	82%	20-04-2026 21:33
PC-HR-02	DELL P2425HE	P2425A884	DisplayPort-1	101	1920x1080	60 Hz	71%	75%	20-04-2026 21:33
PC-MGT-02	HP 527pu	HP527U884	USB-C/TBT (Alt DP)	101	2560x1440	120 Hz	68%	—	20-04-2026 21:33
PC-DEV-03	HP 527pm	HP527M883	USB-C/TBT (Alt DP)	100	2560x1440	120 Hz	58%	78%	20-04-2026 21:33
PC-FINANCE-02	DELL P2425HE	P2425A882	DisplayPort-1	101	1920x1080	60 Hz	55%	75%	20-04-2026 21:33
PC-EXEC-02	DELL U3425WE	U3425A882	Thunderbolt (Alt DP)	105	3440x1440	120 Hz	52%	78%	20-04-2026 21:33
PC-IT-02	HP 527pu	HP527U882	USB-C/TBT (Alt DP)	100	2560x1440	120 Hz	52%	—	20-04-2026 21:33
PC-SALES-01	DELL P2425HE	P2425A885	USB-C (Alt DP)	102	1920x1080	60 Hz	45%	80%	20-04-2026 21:33
PC-EXEC-01	DELL U3425WE	U3425A881	Thunderbolt (Alt DP)	105	3440x1440	120 Hz	45%	80%	20-04-2026 21:33
PC-MGT-01	HP 527pu	HP527U883	USB-C/TBT (Alt DP)	100	2560x1440	120 Hz	44%	—	20-04-2026 21:33

With ScreenGenie telemetry

- Real-time and historical visibility into monitor configurations
- Brightness and contrast usage per monitor
- Resolution, refresh rate, and connection type tracking
- Monitor model and firmware visibility
- Detection of misconfigurations and recurring issues
- Insight into monitor usage and activity

Systems Architecture

Seamless integration

TECHNICAL SPECIFICATIONS

Platform & System Requirements

Operating System

Microsoft® Windows 11

Architecture

x64 (64-bit)

.NET Runtime

.NET 8.0 – Self-contained deployment (no separate runtime installation required)

Hardware Configuration

Laptop or desktop

Support for one or two external monitors

Connections

USB-C / Thunderbolt (including DP Alt Mode)

DisplayPort (direct or via docking station)

HDMI (direct or via docking station)

Support for common docking solutions

Functionality

Automatic configuration

Deduplication

Brightness and contrast per monitor

Monitor order and layout

Vertical alignment

Resolution and refresh rate

Left/right positioning based on connection type, name, or serial number

VCP-codes management

Profile Management

Profile per system

Settings per individual monitor

Automatic application at sign-in (e.g., Task

Scheduler), one-click via the ScreenGenie Engine, or

fully automated via the ScreenGenie Agent

Installation & Deployment

Installer

MSI (suitable for enterprise deployment)

Centralized Installation

Deployable via standard software distribution tools

Command-line Support

Full configuration via CLI

Suitable for scripting and remote management

Silent Installation

Supported, including license key

Management & Integration

Operation

Runs fully in the background (no user interaction required)

Logging

Configuration and status logging available

Manageability

Scalable within enterprise environments

Licensing Model

License

Subscription-based

Terms: 1, 2, 3, or 5 years

License Type

Per system



Windows® 11 – 64bit